

Contact our HS2 Helpdesk team on **08081 434 434**

HS2 Update

Twyford to Greatworth | January 2021

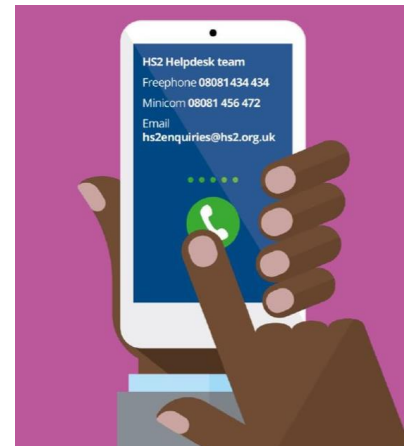
High Speed Two (HS2) is the new high speed railway for Britain. In response to COVID -19, we have worked hard to ensure that our working practices are fully aligned with the Site Operating Procedures produced by the Construction Leadership Council. These procedures have been endorsed by Public Health England. We will be keeping our local websites www.hs2inbucksandox.co.uk and www.hs2innorthants.co.uk up to date with information on our works.

Update on our works

Our works are underway in the Twyford to Greatworth area and initial construction activities have started. This has included some early earthworks to prepare the area for the HS2 route and the set up of construction compounds.

Over the next couple of months you can expect to see the following works in the local area;

- Ground Investigation (GI) works and water monitoring
- Utility works including trial holes
- Continuation of the trial embankment and monitoring south of A4421 near Newton Purcell, which is due to be complete by March 2021
- The set-up of works compounds at A43, A422, A421 and A4421
- Localised clearance of vegetation and fencing along the line of the route from Twyford up to Greatworth
- Haul road, access roads and drainage activities to start January 2021
- Excavation, movement and storage of earthworks
- The creation of several site accesses from points on existing roads.
- Demolition of the existing bridge at A4421 and installation of temporary bridges at A4421 and A421.



Webinars

New for 2021

We will be holding a series of **virtual events** – to keep you updated on the HS2 design and upcoming works focusing on the Twyford to Greatworth area.

We will be sharing dates of events via the HS2 Commonplace website, so register now to be the first to hear about new sessions and find out how to book your place.



Upcoming works

Site haul and access roads

Work will start in early 2021 constructing our internal haul and access roads along the route, initially at Twyford, A4421 and A422. The haul and access roads are temporary structures that will be used to transport excavated materials, large equipment, machinery and works traffic along the line of route. In order to construct these roads, we will need to carry out localised vegetation clearance, drainage work, crossing points and fencing.

Once built, these roads will keep lorries off the local road network as much as possible and help reduce the impact on nearby communities.

There will be specific points at which our HGVs are allowed to gain access to the haul road and these access points will be at our compounds at A43, A422, A421 and A4421.

Lorry routes have been set out in agreement with the local authority. Localised traffic management, including public right of way closures or diversions, may be required to carry out this work safely, particularly at crossing points and we will communicate these through Commonplace.

Utility trial holes

As part of our preparatory works, we need to carry out some utility trial holes around the local area. These trials will confirm the presence of services to inform the construction of the railway line.

Some of these works will need to be carried out in fields near the line of the route and some will be on or adjacent to the carriageways in the area. For trials in the carriageways, short term traffic management or road closures will need to be in place.

These works will start in January 2021.

If you have a question about HS2 or our works, please contact our HS2 Helpdesk team on 08081 434 434 or email hs2enquiries@hs2.org.uk



Traffic Information Guides

We have been listening to feedback from communities who want to know more about the construction traffic routes and predicted vehicle numbers.

We have now issued Traffic Information Guides that present our planned HGV routes and the estimated traffic flows relating to our works.

Sign up to Commonplace to read the online traffic guide or request a copy from the HS2 Helpdesk.

Crossings at A421 and A4421

As part of our haul and access road construction, we will need to cross the A4421.

In order to do this safely, the existing Finmere Bridge at A4421 will be removed, and a temporary bridge installed. This bridge will then carry our haul road and access road over the highway.

By installing this bridge, local traffic can continue to use the roads as normal during the main construction of HS2.

Towards the end of 2020, specialist engineers carried out surveys at the Finmere Bridge to assess its condition. These reports have enabled the team to understand and design the safest way of taking down the structure.

Early in 2021, preparation works at Finmere Bridge will begin and the demolition will take place. This will then be followed by the installation of the new bridge.

Local traffic management will be put in place to carry out these works safely and we will need to close the A4421 during the demolition and installation of the new bridge. These closures will take place over night and at weekends to keep disruption to a minimum.

Alongside these activities, work will also start at the A421 in preparation for the haul road and access road crossing. This work will involve localised vegetation clearance, the creation of an access to the A421 and the construction of an embankment to support the new road as it approaches the bridge. The bridge installation will then take place later in 2021. As with the A4421, traffic management will be put in place to safely carry out this work as required.

Keeping you informed

We are committed to keeping you informed about work on HS2. This includes ensuring you know what to expect and when to expect it, as well as how we can help.

Residents' Charter and Commissioner
The Residents' Charter is our promise to communicate as clearly as we possibly can with people who live along or near the HS2 route.
www.gov.uk/government/publications/hs2-residents-charter

We also have an independent Residents' Commissioner whose job is to make sure we keep to the promises we make in the Charter and to keep it under constant review. Find reports at:
www.gov.uk/government/collections/hs2-independent-commissioner
You can contact the Commissioner at:
residentscommissioner@hs2.org.uk

Construction Commissioner
The Construction Commissioner's role is to mediate and monitor the way in which HS2 Ltd manages and responds to construction complaints. You can contact the Construction Commissioner by emailing:
complaints@hs2.co.uk

Property and compensation
You can find out all about HS2 and properties along the line of route by visiting:
www.gov.uk/government/collections/hs2-property
Find out if you're eligible for compensation at:
www.gov.uk/guides/compensation-if-affected-by-hs2

Holding us to account
If you are unhappy for any reason you can make a complaint by contacting our HS2 Helpdesk team. For more details on our complaints process, please visit our website:
www.hs2.org.uk/how-to-complain

HS2 Working in partnership with **HS2**

Traffic Information Guide
Goddington to Brackley | Winter 2020

High Speed Two (HS2) is the new high-speed railway for Britain. We have committed to create a low carbon railway that is designed, built and operated to the highest health, safety and security standards.

HS2's Site Working Hours
Normal working hours:
Monday to Friday:
8.00am - 6.00pm
Saturday:
8.00am - 1.00pm
Construction works may be carried out for one hour's start-up and one hour's finish-up at the end of these times and construction traffic might also be present during these times.
In some cases, work outside normal hours may take place, and we will inform communities when this occurs.
Construction traffic and worker cars may arrive earlier and depart later than the working hours.

About this guide
This traffic guide will give you details of how construction traffic is going to be managed in your area. This includes all the routes that we plan to use between Goddington and Brackley, along with our forecasted peak delivery numbers. You can get an overview of the control measures that are in place across the whole HS2 route, as well as specific local actions, such as junction improvements and crossings.

About EXFB
EXFB is the main works contractor carrying out the civil engineering works for the new HS2 line in the area. EXFB will undertake all earthworks and landscaping as well as create new structures including bridges, viaducts and green bridges. The construction works are being carried out in a way that will minimise disturbance on local roads and access between villages. You can find details in this guide.

HS2 and the role of the Highways Authority in highway matters
The HS2 Act of Parliament provides HS2 Ltd and their contractors with the powers to work in the highway to construct the new railway. The responsibility that councils have for HS2 works other than other highway works. In all cases, the local Highway Authority is consulted and in certain cases, the consent of the Highway Authority is required. HS2 Ltd and their contractors produce Local Traffic Management Plans and work very closely with the councils and their Highway teams to ensure that traffic is well managed. HS2 Ltd is only required to seek consent or traffic routes for vehicles over 7.5 tonnes. For further information see the HS2 Act or see details for the HS2 Helpdesk on the back of this Guide.

Contact Us

Contact our HS2 Helpdesk team all day, every day of the year on:

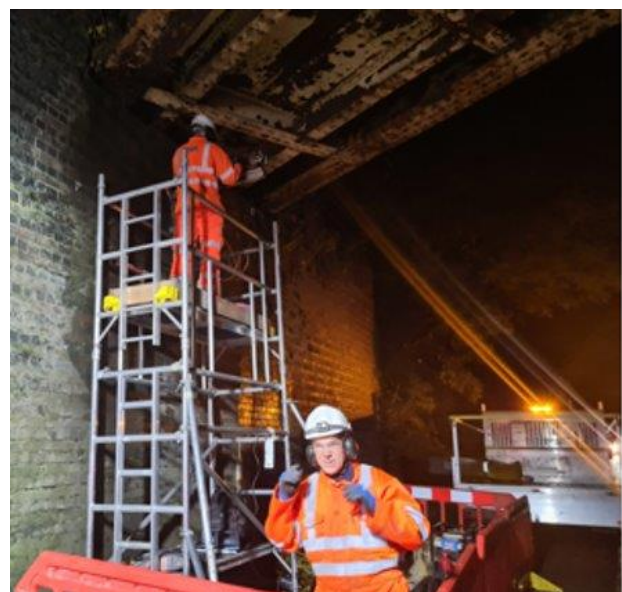
- ☎ Freephone **08081 434 434**
- ☎ Minimum **08081 455 472**
- ✉ Email hs2enquiries@hs2.org.uk

Write to: FREEPOST
HS2 Community Engagement
Website www.hs2.org.uk
To keep up to date with what is happening in your local area, visit www.hs2inyourarea.co.uk

Please contact us if you'd like a free copy of this document in large print, Braille, audio or easy read. You can also contact us for help and information in a different language.

HS2 Ltd is committed to protecting personal information. If you wish to know more about how we use your personal information please see our Privacy Notice <https://www.gov.uk/government/publications/high-speed-two-h2-privacy-notice>

Reference Number: 19C12-ENF-AN-NTE-C309-00002
High Speed Two (HS2) Limited, registered in England and Wales.
Registered office: Two Southalls, One Hill, Quaxdown, Birmingham B4 6QA.
Company registration number: 06791686. VAT registration number: 181 4312 3

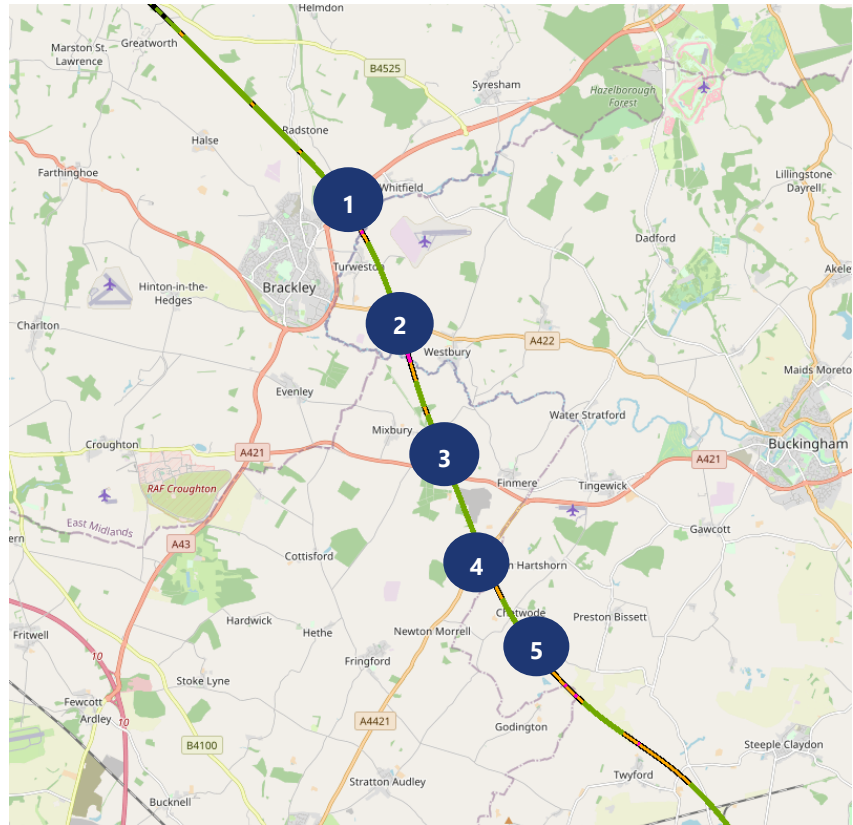


Breaks from highway

As our works progress, there are several locations where we will need to construct a break from highway or a strengthened section of road. These are usually located around our site compounds to create safer entrances for our site traffic to access but will also be necessary where our haul road crosses an existing road. While these are being constructed, there will be a need for some short duration traffic management in the area and we will communicate these through Commonplace.

These will take place in the following areas from January:

- 1** A43 and Radstone Road
- 2** A422 Brackley Road
- 3** Featherbed Lane and the A421
- 4** A4421 and Stratton Audley Road
- 5** School End and Preston Bissett Road



Compounds

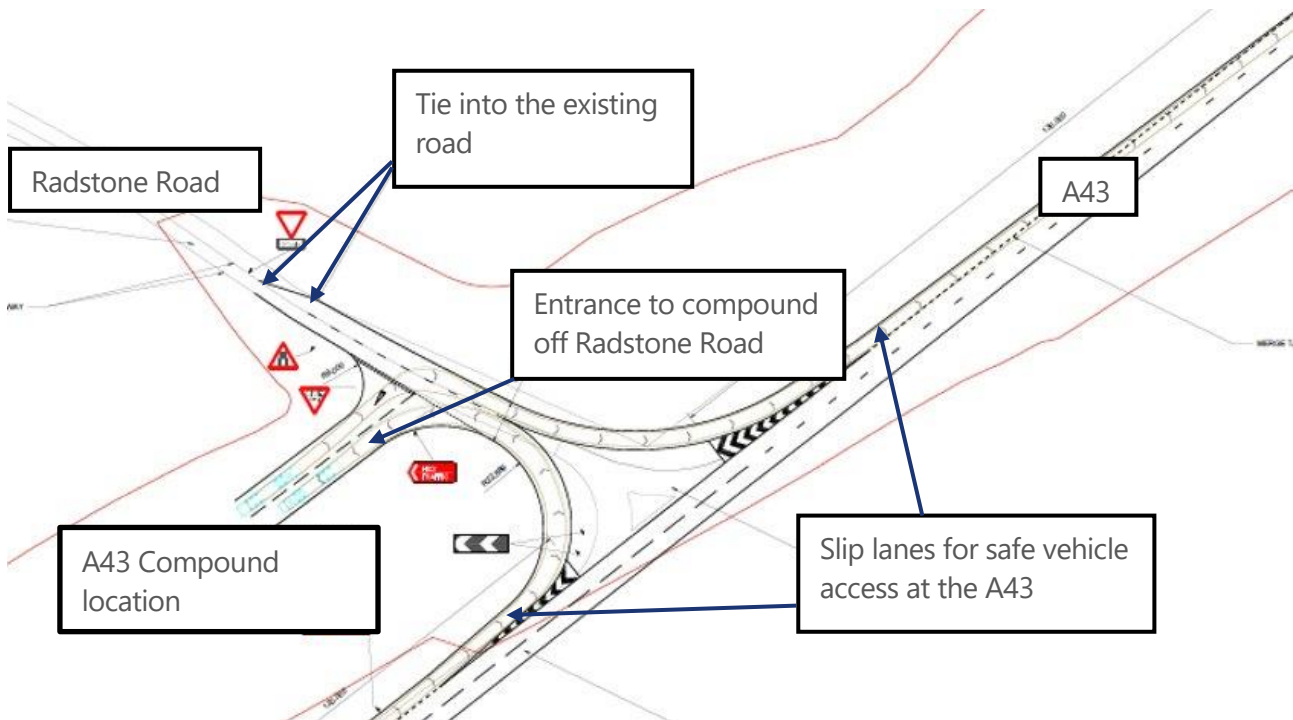
Initial work has begun on our compounds at the A422 and A4421. Work over the winter months has involved preparing the ground for delivery of our cabins, carrying out surveys and installing track matting and initial welfare facilities for our staff. Work will continue into 2021 with the main compound set up at both sites.

Installation of track matting at the A422 compound site is shown opposite.



We will also begin activity at the A43 from February 2021. We will construct a compound off Radstone Road in order to carry out our earthworks activities going north towards Greatworth. Initial activities in this area will be the creation of slip lanes on the A43, and a dedicated site entrance off Radstone Road to enable safe access to our compound. There will be surveys, localised vegetation clearance, utilities works and traffic management in the area to carry out this work.

A43 compound access – indicative layout



Surface water and ground water monitoring

Surface water and ground water monitoring will be taking place across the section from Twyford to Greatworth in 2021.

We will be collecting samples of the water from the Padbury Brook and its tributaries, the River Great Ouse, and Radstone Brook, to test the water quality prior to construction starting. By doing this we will have accurate records of aspects such as oxygen content and temperature that we can then monitor against throughout our construction activities and the operation of the railway.

Keep up to date with our works

Commonplace Website

Our Commonplace website provides the most up to date information about our works in this area.

We would recommend subscribing to our news updates in the Bucks and Oxfordshire Area. You can do this in three easy steps:

1. Visit our local Commonplace websites – www.hs2inbucksandoxfordshire.commonplace.is/ www.hs2innorthants.commonplace.is/
2. Under 'Subscribe to news updates', enter your email address and click 'Get Project News'
3. Now you will get up to date information sent to your email address

On Commonplace you can also view more information on our proposed designs, community engagement documents as well as information on upcoming events in your area.

Welcome to HS2 in Buckinghamshire and Oxfordshire

High Speed Two (HS2) is the new high speed railway for Britain.

This website has information about what we are doing in Buckinghamshire and Oxfordshire, including notifications of our upcoming works, how it's being constructed and what we're doing to make it less disruptive.

Contact us

More about HS2

Subscribe to news updates for HS2 in Bucks & Oxfordshire

Your email

Get project news

Works in your area



Find out about current and upcoming construction works in your area and related engagement events.

View details

Amersham ventilation shaft



Find out about our proposed design, construction approach and the online events we'll be holding for the Amersham ventilation shaft.

View details

Little Missenden Ventilation Shaft Headhouse



Find out about our proposed design, construction approach and the online events we'll be holding for the Little Missenden Ventilation Shaft Headhouse.

View details

Closure and diversion of Station Road, Quainton



Find out more about the closure of Station Road in Quainton and information events.

View details

Great Missenden Link Road improvement scheme



Find out about the design of the widening works for Link Road to improve traffic flow for residents in Great Missenden.

View details

Thame Valley Viaduct



Find out about our proposed design and construction approach for the Thame Valley Viaduct.

View details

Chalfont St Peter ventilation shaft



Colne Valley Viaduct



Chalfont St Giles ventilation shaft and head house



FAQs

Some of our most commonly asked questions in the Twyford to Greatworth area...

Q: When will work start on the construction access road?

A: The construction access road will be used by our construction vehicles to travel up and down the line of route and will reduce the number of vehicles using the local road network. Work to construct the construction access road starts in early 2021

Q: I've spotted an HGV on my road... How can I identify whether this is a HS2 vehicle?

A: Where carrying out HS2-related activities, all our construction vehicles over 3.5 tonnes regularly attending a worksite are required to display a notice in the front vehicle window that the vehicle is working for HS2.

Q: How are you ensuring that roads remain mud and debris free?

A: We have a team of road sweepers on site to ensure that our main construction routes are kept tidy and safe. These routes are swept daily, between the hours of 8.00 and 18.00. We also have vehicle cleaners and wheel washers at our main construction sites.

Community investment

We recently launched a new base in Brackley, which will help provide up to 100 jobs within the local area. For the office fit-out of we used local businesses, including Titan Audio Visual from nearby Southam. We are keen to provide opportunities for local businesses and you can find out more on their website - <https://www.hs2.org.uk/in-your-area/hs2-and-your-business/>

We also run a volunteering “time bank” where you can apply for the use of time from an experienced team to provide practical support to communities. From litter picking and planting trees, to help with social media support, there are many ways we can help!

We are keen to support with volunteering and fundraising work for local charities. If you would like to know more then please contact the HS2 Helpdesk.



HS2 funds for the community

We have two funds which are available to local communities to help with disruption that will be caused by the construction of Phase One of HS2 – **The Community and Environmental Fund (CLEF)** and the **Business and Local Economy Fund (BLEF)**.

Community and business groups along the HS2 route have been awarded over £5million for projects since the funds began running since March 2017.

So far in the local area HS2 has provided funding to Brackley Town Football Club to help with the rebuilding of their clubhouse as well as funding a new village sign in the village of Evenley.

For more information on the funds available visit www.hs2funds.org.uk



Keeping you informed

We are committed to keeping you informed about work on HS2. This includes ensuring you know what to expect and when to expect it, as well as how we can help.

Residents' Charter and Commissioner

The Residents' Charter is our promise to communicate as clearly as we possibly can with people who live along or near the HS2 route.

www.gov.uk/government/publications/hs2-residents-charter

We also have an independent Residents' Commissioner whose job is to make sure we keep to the promises we make in the Charter and to keep it under constant review. Find reports at:

www.gov.uk/government/collections/hs2-ltd-residents-commissioner

You can contact the Commissioner at:
residentscommissioner@hs2.org.uk

Construction Commissioner

The Construction Commissioner's role is to mediate and monitor the way in which HS2 Ltd manages and responds to construction complaints. You can contact the Construction Commissioner by emailing:
complaints@hs2-cc.org.uk

Property and compensation

You can find out all about HS2 and properties along the line of route by visiting:

www.gov.uk/government/collections/hs2-property

Find out if you're eligible for compensation at:

www.gov.uk/claim-compensation-if-affected-by-hs2

Holding us to account


If you are unhappy for any reason you can make a complaint by contacting our HS2 Helpdesk team. For more details on our complaints process, please visit our website:

www.hs2.org.uk/how-to-complain

Contact Us

Contact our HS2 Helpdesk team all day, every day of the year on:

 Freephone **08081 434 434**

 Minicom **08081 456 472**

 Email **HS2enquiries@hs2.org.uk**

Write to:

FREPOST

HS2 Community Engagement

Website **www.hs2.org.uk**

To keep up to date with what is happening in your local area, visit:

[www.hs2inbucksandoxfordshire.](http://www.hs2inbucksandoxfordshire.commonplace.is)

commonplace.is OR

<https://hs2innorthants.commonplace.is/>

Please contact us if you'd like a free copy of this document in large print, Braille, audio or easy read. You can also contact us for help and information in a different language.

HS2 Ltd is committed to protecting personal information. If you wish to know more about how we use your personal information please see our Privacy Notice

<https://www.gov.uk/government/publications/high-speed-two-ltd-privacy-notice>

Reference number: HS2-EW-EK-Ph1-Ar-Ce-C2-OTH-12-01/01/2021

High Speed Two (HS2) Limited, registered in England and Wales.

Registered office: Two Snowhill, Snow Hill Queensway, Birmingham B4 6GA.

Company registration number: 06791686. VAT registration number: 888 8512 56